

**Tulsa County, Oklahoma Juvenile Justice Center Facility Program**  
Tulsa, Oklahoma

**Contact:** Ms. Janet Selser, Architect  
Selser Schaefer Architects  
Tulsa, Oklahoma 74119  
(918) 587-2282  
Email: janet.selser@selserschaefer.com

Judge Doris Fransein, Administrative Juvenile  
Court Judge  
Tulsa County District Court  
Tulsa, Oklahoma 74119  
(918) 596-5904  
Email: Doris.fransein@oscn.net

Project Completed..... October 2009

In June 2009 Tulsa County, OK contracted with Selser Schaefer Architects, KMD Justice and Chinn Planning, Inc. to design a new Juvenile Justice Center for Tulsa County. Chinn Planning, Inc. began the development of the operational and space program in July 2009. The intent of the new Juvenile Justice Center was to provide all Juvenile Court and court related services in one location with a new 60 Bed Juvenile Detention facility. The County also requested that space allocation be developed for related services that serve at-risk youth and families in Tulsa County. These include, for example, a Crisis Intervention Center, an Alternative/Day School, a Health Clinic, Drug and Alcohol Assessment and related programs which are shown on the summary table below. During a series of meetings Chinn Planning, Inc. presented national trends in juvenile court and detention operations, staffing, and facility concepts. A DRAFT Operational and Architectural Program was presented to the Project Advisory Committee for review. The program includes all space allocation tables, housing unit configuration options, and a detention staffing plan and operational cost estimate. The Final Program calls for 194,000 Gross Square Feet, which includes 59,600 Gross Square Feet for the 63-bed Juvenile Detention component.

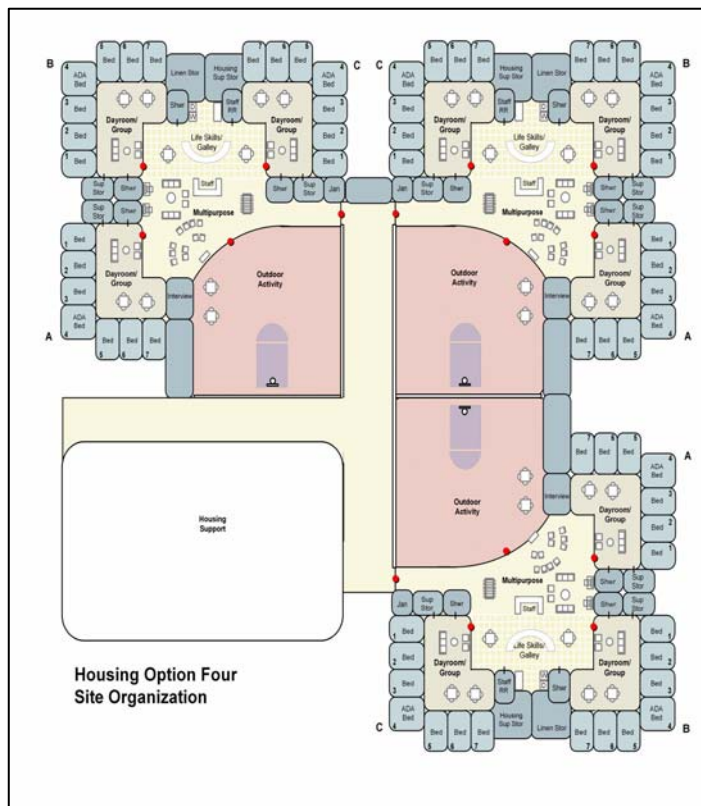


Table 1 TULSA COUNTY JUVENILE JUSTICE CENTER				
Comp. #	Facility Component	Total NSF Component	Grossing Factor	Total DGSF
<b>1.000</b>	<b><u>Public Lobby/Building Support</u></b>			
1.100	Public Lobby	10,040	30%	13,052
1.200	Building Support	3,210	20%	3,852
1.300	Daycare	2,350	25%	2,938
	<b>Subtotal - Public Lobby/Shared Support</b>			<b>19,842</b>
<b>2.000</b>	<b><u>Court Rooms and Judicial Administration</u></b>			
2.100	Judicial Chambers and Administration	6,855	35%	9,254
2.200	Courtrooms, Court Security, and Jury Deliberation	20,735	30%	26,956
<b>3.000</b>	<b><u>Clerk of Court</u></b>	1,600	35%	2,160
<b>4.000</b>	<b><u>District Attorney</u></b>			
4.100	District Attorney	3,531	35%	4,767
4.200	Victim Witness Program	780	35%	1,053
<b>5.000</b>	<b><u>Public Defender</u></b>	3,743	35%	5,053
<b>6.000</b>	<b><u>Juvenile Bureau</u></b>	1,497	35%	2,021
<b>7.000</b>	<b><u>Probation and Intake</u></b>	8,757	35%	11,822
<b>8.000</b>	<b><u>Department of Human Services - Child Welfare</u></b>	1,459	35%	1,970
	<b>Subtotal - Court/Court Related</b>			<b>65,055</b>
<b>9.000</b>	<b><u>Special Program and Services</u></b>	8,959	35%	12,095
	> Shared Services			
	> Tulsa Lawyers for Children			
	> Tulsa Indigent Parent Council			
	> Volunteer/Mentor and Resource Room			
	> OJA Liaison			
	> Community Services Liaison			
	> PARB Review board			
	> CASA			
	> Child Support Enforcement			
	> Family Drug Court			
	> Gang Prevention			
	> Pre-Court Intervention			
	> Drug and Alcohol Assessment			
<b>10.000</b>	<b><u>Health Services Clinic</u></b>	1,440	35%	1,944
<b>11.000</b>	<b><u>Day Program/Alternative School</u></b>	5,160	30%	6,708
<b>12.000</b>	<b><u>Crisis Intervention Center</u></b>	2,826	30%	3,674
	<b>Subtotal - Special Programs and Services</b>			<b>24,420</b>
<b>13.000</b>	<b><u>Juvenile Detention</u></b>			
13.100	Detention Administration and Lobby	2,405	30%	3,127
13.200	Staff Services	760	25%	950
13.300	Detention Intake, Assessment, and Release	3,270	30%	4,251
13.400	Central Control	270	30%	351
13.500	Detention Hearing Room	1,400	30%	1,820
13.600	Education Services	3,500	30%	4,550
13.700	Recreation/Gymnasium	5,050	10%	5,555
13.800	Visitation	1,530	25%	1,913
13.900	Health Services	900	30%	1,170
13.1000	Kitchen and Dining	2,750	25%	3,438
13.1100	Laundry	340	10%	374
13.1200	Facility Maintenance and Storage	1,950	10%	2,145
13.1300	Housing and Housing Support			
	> Housing	10,740	50%	16,110
	> Housing Support	2,340	40%	3,276
	<b>Subtotal - Juvenile Detention</b>			<b>49,029</b>
	<b>TOTAL - FACILITY COMPONENTS</b>			<b>158,346</b>
	Overall Grossing Factor (20%)			31,669
	<b>GRAND TOTAL - FACILITY COMPONENTS</b>			<b>190,015</b>